



# DAFTAR HARGA PIPA uPVC

## DAFTAR HARGA OKTOBER 2021

STANDAR SNI 06-0084:2002 STANDAR ISO 4422-1990

### Rangkaian Pipa Rucika untuk Saluran Air Bersih Bertekanan

Seri	ND (Inch)	DIAMETER (mm)			Panjang Efektif (m/btg)	HARGA RUCIKASAFE		HARGA RUCIKALOK	
		Luar	x	Dalam		Per Meter	Per Batang	Per Meter	Per Batang
<b>S 8</b> TEKANAN NOMINAL 12,5 BAR (1,25 Mpa)	1/2"	20	x	17.60	4	8.375	33.500		
	3/4"	25	x	22.60	4	10.700	42.800		
	1"	32	x	28.20	4	16.975	67.900		
	1 1/4"	40	x	35.20	4	26.300	105.200		
<b>S 8</b> TEKANAN NOMINAL 16 BAR (1,6 Mpa)	2"	63	x	55.40	6			67.100	402.600
	3"	90	x	79.20	6			135.267	811.600
	4"	110	x	96.80	6			201.750	1.210.500
	6"	160	x	141.00	6			421.850	2.531.100
	8"	200	x	176.20	6			661.383	3.968.300
	10"	250	x	220.40	6			1.032.783	6.196.700
<b>S 10</b> TEKANAN NOMINAL 10 BAR (1,0 Mpa)	1/2"	20	x	18.00	4	6.050	24.200		
	3/4"	25	x	22.60	4	8.900	35.600		
	1"	32	x	28.60	4	14.700	58.800		
	1 1/4"	40	x	36.20	4	21.525	86.100		
	1 1/2"	50	x	45.20	6	33.183	199.100		
<b>S 10</b> TEKANAN NOMINAL 12,5 BAR (1,25 Mpa)	2"	63	x	57.00	6	52.317	313.900	54.250	325.500
	3"	90	x	81.40	6	106.067	636.400	110.367	662.200
	4"	110	x	99.40	6	159.533	957.200	165.683	994.100
	6"	160	x	144.60	6	338.783	2.032.700	347.550	2.085.300
	8"	200	x	180.80	6			543.917	3.263.500
	10"	250	x	226.20	6			845.067	5.070.400
	12"	315	x	285.00	6			1.364.967	8.189.800
	16"	400	x	361.80	6			2.216.917	13.301.500
	20"	500	x	452.20	6			3.625.483	21.752.900
<b>S 12,5</b> TEKANAN NOMINAL 10 BAR (1,0 Mpa)	2"	63	x	58.20	6	42.300	253.800	45.150	270.900
	3"	90	x	83.00	6	88.450	530.700	91.967	551.800
	4"	110	x	101.60	6	128.450	770.700	135.250	811.500
	6"	160	x	147.60	6	275.550	1.653.300	287.700	1.726.200
	8"	200	x	184.60	6			446.600	2.679.600
	10"	250	x	230.80	6			698.133	4.188.800
	12"	315	x	290.80	6			1.130.050	6.780.300
	14"	355	x	327.80	6			1.435.883	8.615.300
	16"	400	x	369.40	6			1.818.700	10.912.200
	20"	500	x	461.80	6			2.999.433	17.996.600
	24"	630	x	581.80	6			4.713.667	28.282.000

\*Harga sebelum PPN10%

# DAFTAR HARGA PIPA uPVC

## DAFTAR HARGA OKTOBER 2021

STANDAR SNI 06-0084:2002 STANDAR ISO 4422-1990

### Rangkaian Pipa Rucika untuk Saluran Air Bersih Bertekanan

Seri	ND (Inch)	DIAMETER (mm)		Panjang Efektif (m/btg)	HARGA RUCIKASAFE		HARGA RUCIKALOK	
		Luar	Dalam		Per Meter	Per Batang	Per Meter	Per Batang
<b>S 12,5</b> <b>TEKANAN</b> <b>NOMINAL</b> <b>8 BAR</b> <b>(0,8 Mpa)</b>	1½"	50	46.00	6	28.333	170.000		
	2"	63	59.00	6	36.033	216.200	37.750	226.500
<b>S 16</b> <b>TEKANAN</b> <b>NOMINAL</b> <b>8 BAR</b> <b>(0,8 Mpa)</b>	3"	90	84.40	6	71.600	429.600	74.300	445.800
	4"	110	103.20	6	105.017	630.100	110.450	662.700
	6"	160	150.20	6	221.100	1.326.600	228.317	1.369.900
	8"	200	187.60	6			364.317	2.185.900
	10"	250	234.60	6			564.667	3.388.000
	12"	315	295.60	6			912.500	5.475.000
	14"	355	333.20	6			1.161.967	6.971.800
	16"	400	375.40	6			1.477.250	8.863.500
	20"	500	469.40	6			2.440.833	14.645.000
	24"	630	591.40	6			2.844.400	17.066.400

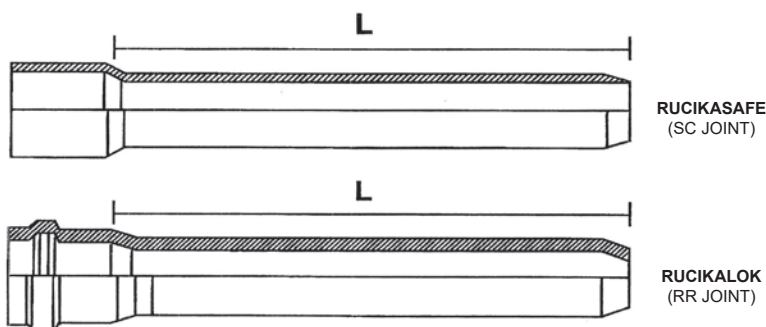
Note :

RUCIKASAFE = Solven Cement (SC) Joint, pipa dengan socket penyambungan lem.

RUCIKALOK = Rubber Ring (RR) Joint, pipa dengan socket penyambungan ring karet ( z-joint).

Harga belum termasuk PPN 10%, loco pabrik Di Bekasi, Jawa Barat diatas truk.

Harga dapat berubah sewaktu-waktu tanpa pemberitahuan terlebih dahulu



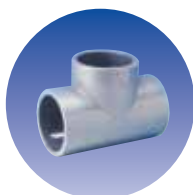
L = Panjang Effective

# DAFTAR HARGA FITTING uPVC

DAFTAR HARGA OKTOBER 2021  
STANDAR SNI 06-0084:2002 STANDAR ISO 4422-1990

## INJECTION MOULDING FITTING

### TEE SOLVENT CEMENT (EQUAL & REDUCED)



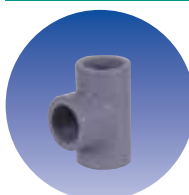
Size (mm)	Price/Unit (Rp)
Ø 20 x 20 x 20	3.700
Ø 25 x 25 x 25	5.300
Ø 25 x 20 x 25	5.300
Ø 32 x 32 x 32	9.800
Ø 32 x 25 x 32	12.800
Ø 32 x 20 x 32	13.600
Ø 40 x 40 x 40	14.500
Ø 40 x 32 x 40	18.700
Ø 40 x 25 x 40	17.100
Ø 40 x 20 x 40	18.000
Ø 50 x 50 x 50	24.700
Ø 50 x 40 x 50	31.000
Ø 50 x 32 x 50	33.700
Ø 50 x 25 x 50	35.200
Ø 50 x 20 x 50	28.200
Ø 63 x 63 x 63	83.300
Ø 63 x 50 x 63	83.300
Ø 63 x 40 x 63	92.600
Ø 63 x 32 x 63	83.300
Ø 63 x 25 x 63	88.400
Ø 90 x 90 x 90	229.600
Ø 90 x 63 x 90	396.700
Ø 90 x 50 x 90	409.900
Ø 90 x 32 x 90	326.200
Ø 110 x 110 x 110	365.000
Ø 110 x 90 x 110	499.400
Ø 110 x 63 x 110	499.400
Ø 110 x 50 x 110	388.900
Ø 160 x 160 x 160	1.079.800
Ø 160 x 110 x 160	1.512.000
Ø 160 x 90 x 160	1.512.000
Ø 160 x 63 x 160	1.646.400

### KNEE SOLVENT CEMENT



Size (mm)	Price/Unit (Rp)
Ø 20	3.500
Ø 25	4.600
Ø 32	7.100
Ø 40	11.400
Ø 50	18.700
Ø 63	78.600
Ø 90	182.300
Ø 110	310.700
Ø 160	870.900

### FAUCET TEE (BSP Tread Taper)



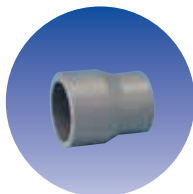
Size (mm)	Price/Unit (Rp)
Ø 20 x 1/2"	3.500
Ø 25 x 3/4"	4.600

### FAUCET KNEE (BSP Tread Taper)



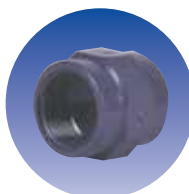
Size (mm)	Price/Unit (Rp)
Ø 20 x 1/2"	3.500
Ø 25 x 3/4"	5.100

### REDUCER SC/ SC



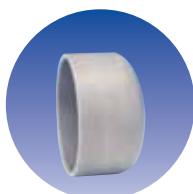
Size (mm)	Price/Unit (Rp)
Ø 25 x 20	4.200
Ø 32 x 25	6.200
Ø 32 x 20	7.100
Ø 40 x 32	10.700
Ø 40 x 25	11.200
Ø 50 x 40	14.900
Ø 50 x 32	17.200
Ø 50 x 25	49.700
Ø 90 x 63	91.800

### FAUCET SOCKET



Size (mm)	Price/Unit (Rp)
Ø 20 x 1/2"	21.700
Ø 25 x 3/4"	27.400
Ø 32 x 1"	43.200
Ø 40 x 1 1/4"	48.800
Ø 50 x 1 1/2"	65.300
Ø 63 x 2"	93.200
Ø 90 x 3"	281.500
Ø 110 x 4"	416.400

### CAP



Size (mm)	Price/Unit (Rp)
Ø 20	4.200
Ø 25	5.700
Ø 32	7.500
Ø 40	11.000
Ø 50	16.800

### VALVE SOCKET



Size (mm)	Price/Unit (Rp)
Ø 20 x 1/2"	11.000
Ø 25 x 3/4"	11.900
Ø 32 x 1"	11.900
Ø 40 x 1 1/4"	18.400
Ø 50 x 1 1/2"	32.200
Ø 63 x 2"	52.400
Ø 90 x 3"	170.200
Ø 110 x 4"	328.700

**RUCIKA**

**SAFE & LOK**



# DAFTAR HARGA FITTING uPVC

DAFTAR HARGA OKTOBER 2021  
STANDAR SNI 06-0084:2002 STANDAR ISO 4422-1990

## INJECTION MOULDING FITTING

### RUBBER RING TEE



Size (mm)	Price/Unit (Rp)
Ø 63 x 63 x 63	595.500
Ø 90 x 90 x 90	781.800
Ø 90 x 63 x 90	725.300
Ø 110 x 110 x 110	896.000
Ø 110 x 90 x 110	839.100
Ø 110 x 63 x 110	839.100
Ø 160 x 160 x 160	1.983.200
Ø 160 x 110 x 160	1.776.900
Ø 160 x 90 x 160	2.032.400
Ø 160 x 63 x 160	1.337.100

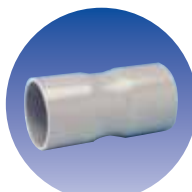
### EQUAL & REDUCER TEE RR/ FL/ RR



Size (mm)	Price/Unit (Rp)
Ø 63 x 50 x 63	1.542.100
Ø 90 x 80 x 90	1.784.500
Ø 90 x 50 x 90	1.623.400
Ø 110 x 100 x 100	2.534.100
Ø 110 x 80 x 110	2.093.800
Ø 110 x 50 x 110	2.193.100
Ø 160 x 150 x 160	4.100.500
Ø 160 x 100 x 160	3.917.300
Ø 160 x 80 x 160	3.752.400

## FABRICATED FITTING

### DOUBLE SOCKET (Solvent Cement)



Size (mm)	Price/Unit (Rp)
Ø 20	6.200
Ø 25	8.100
Ø 32	8.800
Ø 40	10.600
Ø 50	15.100
Ø 63	21.400
Ø 90	46.900
Ø 110	61.400
Ø 160	140.500

### DOUBLE SOCKET (Rubber Ring)



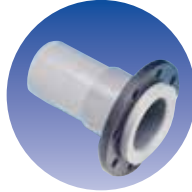
Size (mm)	Price/Unit (Rp)
Ø 63	66.000
Ø 90	104.800
Ø 110	141.000
Ø 160	317.000
Ø 200	477.200
Ø 250	858.900
Ø 315	1.403.300

### REPAIR SOCKET (Rubber Ring)



Size (mm)	Price/Unit (Rp)
Ø 63	57.500
Ø 90	90.200
Ø 110	128.300
Ø 160	240.300
Ø 200	398.800
Ø 250	627.600
Ø 315	1.069.000

### FLANGE SOCKET (Solvent Cement)



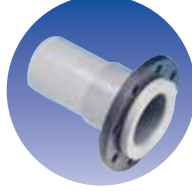
Size (mm)	Price/Unit (Rp)
Ø 50 x 40	283.500
Ø 63 x 50	358.000
Ø 90 x 80	555.700
Ø 110 x 100	811.300
Ø 160 x 150	1.284.600

### FLANGE SOCKET (Rubber Ring)



Size (mm)	Price/Unit (Rp)
Ø 63 x 50	372.700
Ø 90 x 80	580.100
Ø 110 x 100	846.200
Ø 160 x 150	1.376.700
Ø 200 x 200	2.173.400
Ø 250 x 250	3.086.000
Ø 315 x 300	6.251.600

### FLANGE SPIGOT



Size (mm)	Price/Unit (Rp)
Ø 63 x 50	351.400
Ø 90 x 80	549.100
Ø 110 x 100	804.700
Ø 160 x 150	1.278.600
Ø 200 x 200	2.037.900
Ø 250 x 250	2.854.900
Ø 315 x 300	5.848.400

### FLANGE



Size (mm)	Price/Unit (Rp)
Ø 50	195.400
Ø 63	244.800
Ø 90	400.200
Ø 110	611.600
Ø 160	942.900
Ø 200	1.503.400
Ø 250	1.962.100
Ø 315	4.077.000

**RUCIKA**

**SAFE & LOK**



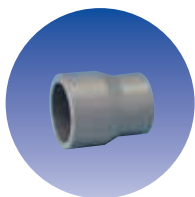
# DAFTAR HARGA FITTING uPVC

DAFTAR HARGA OKTOBER 2021

STANDAR SNI 06-0084:2002 STANDAR ISO 4422-1990

## FABRICATED FITTING

### REDUCER SOCKET/SOCKET (Solvent Cement)



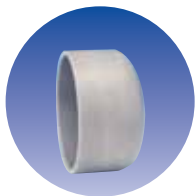
Size (mm)	Price/Unit (Rp)
Ø 63 x 32	81.300
Ø 63 x 50	81.800
Ø 90 x 63	91.800
Ø 90 x 50	91.800
Ø 110 x 90	104.000
Ø 110 x 63	122.600
Ø 160 x 110	224.000

### LONG BEND DOUBLE SOCKET (Rubber Ring)



Size (mm)	Price/Unit (Rp)
Ø 63 x 11°	90.600
Ø 90 x 11°	165.700
Ø 110 x 11°	253.600
Ø 160 x 11°	666.200
Ø 200 x 11°	1.122.900
Ø 250 x 11°	2.010.300
Ø 315 x 11°	3.091.500
Ø 400 x 11°	On Request
Ø 500 x 11°	On Request
Ø 630 x 11°	On Request
Ø 63 x 22°	93.400
Ø 90 x 22°	180.200
Ø 110 x 22°	284.200
Ø 160 x 22°	764.000
Ø 200 x 22°	1.269.200
Ø 250 x 22°	2.223.400
Ø 315 x 22°	3.409.100
Ø 400 x 22°	On Request
Ø 500 x 22°	On Request
Ø 630 x 22°	On Request
Ø 63 x 45°	102.700
Ø 90 x 45°	208.700
Ø 110 x 45°	333.800
Ø 160 x 45°	897.900
Ø 200 x 45°	1.488.300
Ø 250 x 45°	2.759.700
Ø 315 x 45°	4.172.300
Ø 400 x 45°	On Request
Ø 500 x 45°	On Request
Ø 630 x 45°	On Request
Ø 63 x 90°	121.300
Ø 90 x 90°	238.500
Ø 110 x 90°	448.300
Ø 160 x 90°	1.038.100
Ø 200 x 90°	2.109.700
Ø 250 x 90°	3.831.700
Ø 315 x 90°	5.936.900
Ø 400 x 90°	On Request
Ø 500 x 90°	On Request
Ø 630 x 90°	On Request

### CAP (Solvent Cement)



Size (mm)	Price/Unit (Rp)
Ø 63	36.900
Ø 90	58.800
Ø 110	71.300
Ø 160	150.100

### LONG BEND SOCKET/ SPIGOT (Rubber Ring)



Size (mm)	Price/Unit (Rp)
Ø 63 x 11°	54.900
Ø 90 x 11°	114.000
Ø 110 x 11°	176.700
Ø 160 x 11°	494.800
Ø 200 x 11°	860.700
Ø 250 x 11°	1.510.900
Ø 315 x 11°	2.426.600
Ø 400 x 11°	On Request
Ø 500 x 11°	On Request
Ø 630 x 11°	On Request
Ø 63 x 22°	63.600
Ø 90 x 22°	128.500
Ø 110 x 22°	200.000
Ø 160 x 22°	580.100
Ø 200 x 22°	985.100
Ø 250 x 22°	1.693.900
Ø 315 x 22°	2.925.900
Ø 400 x 22°	On Request
Ø 500 x 22°	On Request
Ø 630 x 22°	On Request
Ø 63 x 45°	66.000
Ø 90 x 45°	147.000
Ø 110 x 45°	248.900
Ø 160 x 45°	689.900
Ø 200 x 45°	1.168.000
Ø 250 x 45°	2.169.700
Ø 315 x 45°	3.611.000
Ø 400 x 45°	On Request
Ø 500 x 45°	On Request
Ø 630 x 45°	On Request
Ø 63 x 90°	82.100
Ø 90 x 90°	177.700
Ø 110 x 90°	334.300
Ø 160 x 90°	799.700
Ø 200 x 90°	1.685.800
Ø 250 x 90°	3.040.200
Ø 315 x 90°	5.466.300
Ø 400 x 90°	On Request
Ø 500 x 90°	On Request
Ø 630 x 90°	On Request

### LONG BEND DOUBLE SOCKET (Solvent Cement)



Size (mm)	Price/Unit (Rp)
Ø 63 x 11°	41.500
Ø 90 x 11°	83.400
Ø 110 x 11°	134.700
Ø 160 x 11°	408.800
Ø 63 x 22°	48.800
Ø 90 x 22°	97.900
Ø 110 x 22°	159.100
Ø 160 x 22°	481.600
Ø 63 x 45°	51.500
Ø 90 x 45°	112.800
Ø 110 x 45°	201.500
Ø 160 x 45°	597.500
Ø 63 x 90°	67.500
Ø 90 x 90°	140.500
Ø 110 x 90°	286.800
Ø 160 x 90°	701.000

**RUCIKA**

**SAFE & LOK**



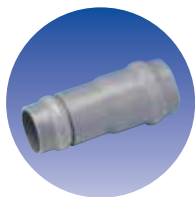
# DAFTAR HARGA FITTING uPVC

DAFTAR HARGA OKTOBER 2021

STANDAR SNI 06-0084:2002 STANDAR ISO 4422-1990

## FABRICATED FITTING

### REDUCER SOCKET/ SOCKET (Rubber Ring)



Size (mm)	Price/Unit (Rp)
Ø 90 x 63	132.500
Ø 110 x 90	186.200
Ø 110 x 63	188.500
Ø 160 x 110	361.800
Ø 160 x 90	345.700
Ø 200 x 160	577.900
Ø 200 x 110	563.400
Ø 250 x 200	1.011.400
Ø 250 x 160	1.004.900
Ø 315 x 250	1.665.100
Ø 315 x 200	1.624.700

### Welded Tee (FRP Reinforced) 3 x Socket Rubber Ring



Size (mm)	Price/Unit (Rp)
Ø 200 x 200 x 200	1.927.600
Ø 200 x 160 x 200	1.670.200
Ø 200 x 110 x 200	1.484.100
Ø 200 x 90 x 200	1.376.500
Ø 250 x 250 x 250	3.228.000
Ø 315 x 315 x 315	4.863.600
Ø 315 x 200 x 315	3.727.500
Ø 315 x 160 x 315	3.354.500
Ø 315 x 110 x 315	3.054.000

### CAP (Rubber Ring)



Size (mm)	Price/Unit (Rp)
Ø 63mm	64.100
Ø 90mm	116.400
Ø 110mm	225.900
Ø 160mm	342.500

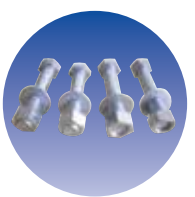
### Welded Tee (FRP Reinforced) Socket / Flange



Size (mm)	Price/Unit (Rp)
Ø 200 x 200 x 200	3.782.500
Ø 200 x 150 x 200	2.890.100
Ø 200 x 100 x 200	2.418.100
Ø 200 x 80 x 200	1.920.300
Ø 250 x 250 x 250	5.831.800
Ø 315 x 300 x 315	10.044.600
Ø 315 x 200 x 315	5.601.700
Ø 315 x 150 x 315	4.672.400
Ø 315 x 100 x 315	4.016.000

## AKSESORIS

### Perangkat Mur Baut dan Ring untuk Koneksi Flange



Size (mm)	Price/Unit (Rp)
Ø 40mm	40.900
Ø 50mm	40.900
Ø 63mm	40.900
Ø 90mm	85.300
Ø 110mm	94.100
Ø 160mm	338.200
Ø 200mm	364.500
Ø 250mm	507.400
Ø 315mm	633.500

### BLIND FLANGE



Size (mm)	Price/Unit (Rp)
Ø 40mm	227.900
Ø 50mm	295.700
Ø 80mm	499.600
Ø 100mm	739.000
Ø 150mm	1.452.500
Ø 200mm	1.911.200
Ø 250mm	2.446.200
Ø 300mm	4.000.600

### RUBBER RING (SBR)



Size (mm)	Price/Unit (Rp)
Ø 63mm	10.100
Ø 90mm	14.100
Ø 110mm	18.500
Ø 160mm	33.500
Ø 200mm	48.700
Ø 250mm	73.600
Ø 315mm	149.800
Ø 400mm	285.700
Ø 500mm	1.264.600

### LUBRICANT



Harga Perbotol  
Rp. 114.100

### LEM RUGLUE



Harga Perkaleng  
Rp. 55.000

Note :

RUCIKASAFE = Solvent Cement (SC) Joint, pipa dengan socket penyambungan lem.

RUCIKALOK = Rubber Ring (RR) Joint, pipa dengan socket penyambungan ring karet (z-joint).

Harga belum termasuk PPN 10%, loco pabrik di Bekasi, Jawa Barat diatas truk.

Harga dapat berubah sewaktu-waktu tanpa pemberitahuan terlebih dahulu

**PT WAHANA DUTA JAYA RUCIKA**

Alia Building, 7<sup>th</sup> Floor  
Jl. M.I. Ridwan Rais 10-18 (Gambir)  
Jakarta 10110, Indonesia  
Phone: (021) 386 7717  
Fax: (021) 386 7686